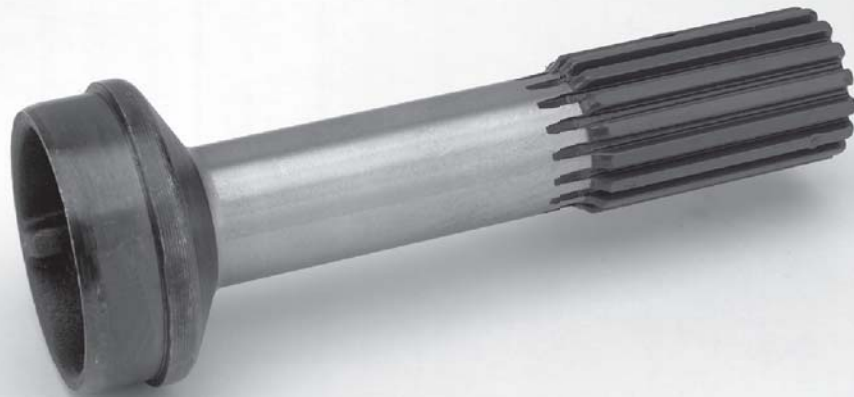




Splined Stubs



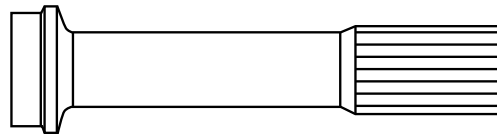
Standard, Midship & Extreme Travel

MANUFACTURER OF DRIVELINE COMPONENTS
1500 11TH AVENUE ROCKFORD, ILLINOIS 61104
PHONE (815) 962-1411 FAX (815) 965-4857
RockfordDriveLine.com

How to Use This Section

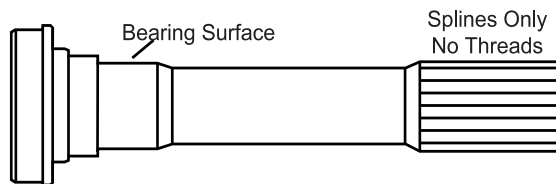
Determine which type of splined stub shaft you have. Rockford offers slip style splined stub shafts & midship style splined stub shafts. If you have a midship style shaft you will need to determine if it is used with a slip yoke, companion flange or end yoke. This can be identified by referring to the illustrations and descriptions at the top of each page.

Stub Shafts (Slip Yoke Style)



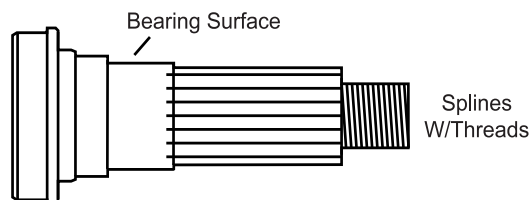
Slip style splined stub shafts do not have a machined bearing diameter required for center bearing assemblies.

Midship Stub Shafts (Slip Yoke Style)



Midship stub shafts used with slip yokes have a machined bearing diameter required for center bearing assemblies and do not have threads at the end.

Midship Stub Shafts (Companion Flange or End Yoke Style)



Midship stub shafts used with companion flanges or end yokes have a machined bearing diameter required for center bearing assemblies and have threads at the end.

1. Determine the spline O.D. - Stubs are sorted by the major diameter of the spline, this is shown in ***Bold Italics*** at the top of each listing for easy lookup.
2. Determine the number of teeth - This is also shown in ***Bold Italics*** at the top of each listing.
3. Determine the tube diameter & wall thickness or continue to step 4.
4. Determine the butt diameter (**A**) by measuring the inside diameter of the tubing & adding .010".
Note: You are adding .010" to the inside diameter of the tube to achieve the press fit required between the tubing and stub shaft.
5. Measure the distance from the end of the spline to the weld (**B**).

End of spline to radius, length of spline, length of shoulder, shoulder diameter & thread sizes are also included for additional identification.

Spline dimensions are shown in ***Bold Italics*** in all sections for easy lookup - Bearing diameter is also shown to the far right on midship stub applications for quick referencing.

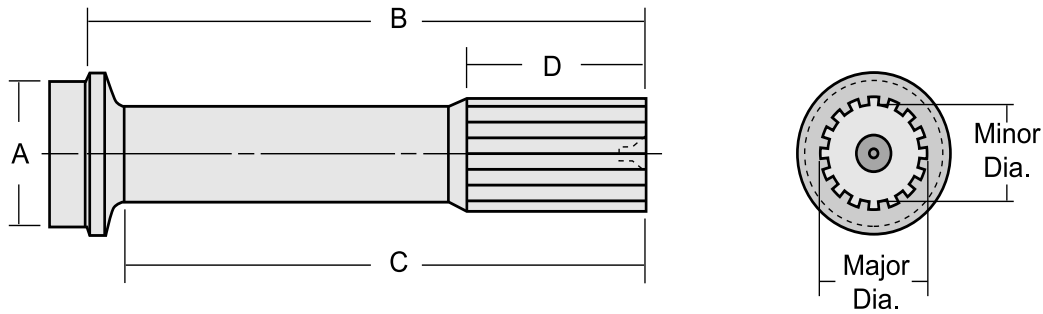
RDL Part Number	Fits Tube Diameter	Tube Wall Thickness	A Butt Diameter	B End of Spline to Weld	C End of Spline to Radius	D Length of Spline	Coating on Spline
-----------------	--------------------	---------------------	---------------------------	-----------------------------------	-------------------------------------	------------------------------	-------------------

2.500 - 16 Spline

R6-40-521	4.000	0.134	3.750	10.562	9.562	4.000	YES
-----------	-------	-------	-------	--------	-------	-------	-----

Notice: The data contained in this catalog has been thoroughly checked for accuracy, however we cannot assume any responsibility for errors, omissions or typographical mistakes that may appear.

STUB SHAFTS (Slip Yoke Style)



RDL Part Number	Fits Tube Diameter	Tube Wall Thickness	A Butt Diameter	B End of Spline to Weld	C End of Spline to Radius	D Length of Spline	Coating on Spline
-----------------	--------------------	---------------------	--------------------	----------------------------	------------------------------	-----------------------	-------------------

1.250 - 16 Spline

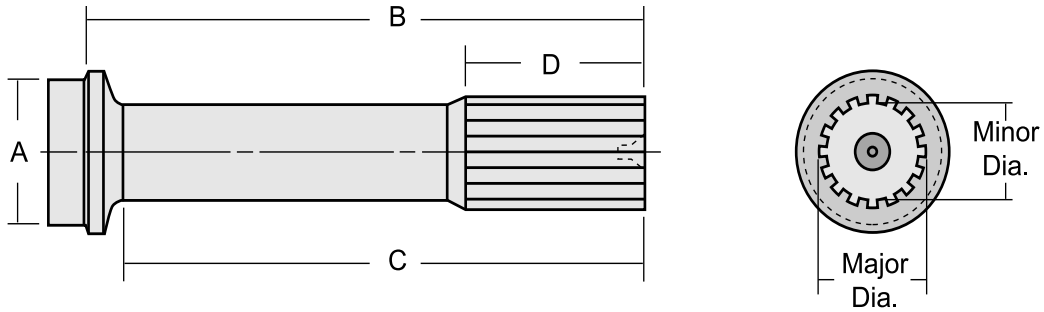
R2-40-1771	1.250	0.120	1.031	6.125	5.375	2.000	YES
R2-42-501	1.250	0.188	0.880	6.125	5.375	2.000	YES
R2-40-971	1.750	0.065	1.635	4.469	3.938	2.000	YES
R2-40-2241	1.750	0.095	1.566	6.000	5.406	2.000	YES
R2-40-1741	2.000	0.083	1.844	6.000	5.406	2.000	YES
R2-40-2381	2.000	0.120	1.766	6.000	5.406	2.000	YES
R2-40-2381A	2.000	0.125	1.756	6.000	5.406	2.000	YES
R2-40-2301	2.500	0.065	2.375	7.750	7.031	2.500	YES
R2-40-3127	2.500	0.083	2.344	7.750	7.031	2.500	YES

1.375 - 16 Spline

R2-40-3177	1.250	0.120	1.015	5.188	4.625	2.250	YES
R2-40-2741	1.750	0.095	1.566	6.688	6.125	2.250	YES
R2-40-2681	1.750	0.095	1.566	7.750	7.250	2.250	YES
R2-40-2681-2	1.750	0.095	1.566	7.750	7.250	FULL	YES
R2-40-1427**	1.750	Explorer OE	1.578	6.188	5.625	2.250	YES
R2-40-1031	2.000	0.083	1.844	5.188	4.625	2.250	YES
R2-40-1841	2.000	0.083	1.844	6.562	6.000	2.125	YES
R2-40-2021	2.000	0.120	1.766	5.188	4.625	2.250	YES
R2-40-1701	2.000	0.120	1.766	6.188	5.625	2.250	YES
R2-40-1701-1	2.000	0.120	1.766	6.688	6.125	2.250	YES
R2-40-1701-3	2.000	0.120	1.766	7.750	7.250	2.250	YES
R2-40-1701-2	2.000	0.120	1.766	7.750	7.250	FULL	YES
R2-40-1811	2.500	0.065	2.375	6.344	5.625	2.250	YES
R2-40-1291	2.500	0.065	2.375	6.844	6.125	2.250	YES
R2-40-1711	2.500	0.083	2.344	6.344	5.625	2.250	YES

** New addition to MC0518-5 catalog

STUB SHAFTS (Slip Yoke Style)



RDL Part Number	Fits Tube Diameter	Tube Wall Thickness	A Butt Diameter	B End of Spline to Weld	C End of Spline to Radius	D Length of Spline	Coating on Spline
-----------------	--------------------	---------------------	--------------------	----------------------------	------------------------------	-----------------------	-------------------

1.375 - 16 Spline (cont.)

R2-40-1851	2.500	0.083	2.344	7.531	6.812	2.250	YES
R2-40-3197**	2.500	0.095	2.317	6.344	5.625	2.250	YES
R2-40-1951**	2.500	0.095	2.317	7.531	6.812	2.250	YES
R2-40-3161	2.750	0.065	2.625	7.625	6.812	2.250	YES
R2-40-2321	2.750	0.065	2.625	12.750	12.250	2.250	YES
R2-40-2651	2.750	0.083	2.594	12.750	12.250	2.250	YES
R2-40-1221	3.000	0.065	2.875	6.438	5.625	2.250	YES
R2-40-2051	3.000	0.065	2.875	7.625	6.812	2.250	YES
R2-40-1521	3.000	0.083	2.844	6.438	5.625	2.250	YES
R2-40-2231	3.000	0.083	2.844	7.625	6.812	2.250	YES
R2-40-1871	3.000	0.083	2.844	8.641	7.828	2.250	YES
R2-40-1671	3.500	0.065	3.375	6.625	5.625	2.250	YES
R2-40-1531	3.500	0.083	3.344	6.625	5.625	2.250	YES

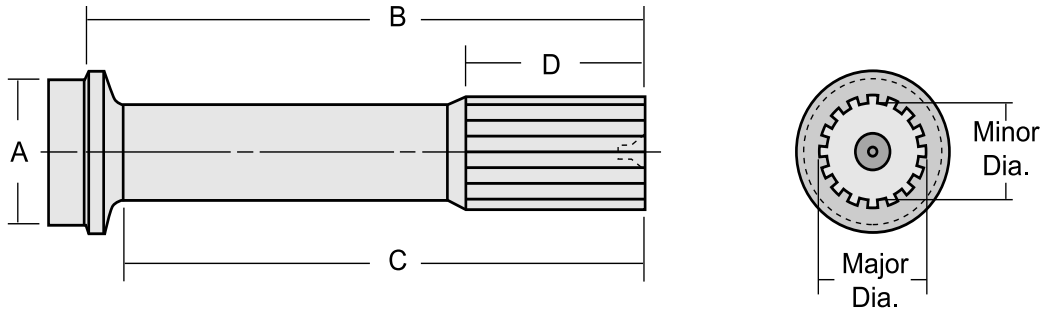
1.375 - 31 Based on 32 Involute Spline

R2-40-1781	2.000	0.120	1.766	7.000	6.438	2.813	NO
------------	-------	-------	-------	-------	-------	-------	----

1.500 - 16 Spline

R3-40-1471	2.500	0.083	2.344	5.625	4.938	2.500	YES
R3-40-3206**	2.500	0.083	2.344	10.125	9.500	9.250	NO
R3-40-1472**	2.500	0.095	2.317	5.625	4.938	2.500	YES
R3-40-3156	2.750	0.083	2.594	7.250	6.438	2.500	YES
R3-40-2131	2.750	0.083	2.594	8.250	7.438	3.500	YES
R3-40-1101	3.000	0.083	2.844	5.938	5.125	2.500	YES
R3-40-1611	3.000	0.083	2.844	7.250	6.438	2.500	YES
R3-40-1421	3.000	0.083	2.844	7.406	6.594	3.000	YES

STUB SHAFTS (Slip Yoke Style)



RDL Part Number	Fits Tube Diameter	Tube Wall Thickness	A Butt Diameter	B End of Spline to Weld	C End of Spline to Radius	D Length of Spline	Coating on Spline
-----------------	--------------------	---------------------	--------------------	----------------------------	------------------------------	-----------------------	-------------------

1.500 - 16 Spline (Cont.)

R3-40-1531	3.500	0.083	3.344	6.563	5.626	3.000	YES
R3-40-1621	3.500	0.083	3.344	7.344	6.406	2.500	YES
R3-40-1491	3.500	0.083	3.344	7.531	6.594	3.000	YES
R3-40-1541	4.000	0.083	3.844	6.812	5.875	3.000	YES
R3-40-1281	4.500	0.095	4.318	7.688	6.750	2.500	YES

1.563 - 16 Spline

R3-40-1571	3.500	0.083	3.344	6.750	5.812	3.000	YES
R3-40-1871	3.500	0.083	3.344	8.750	7.812	3.000	YES

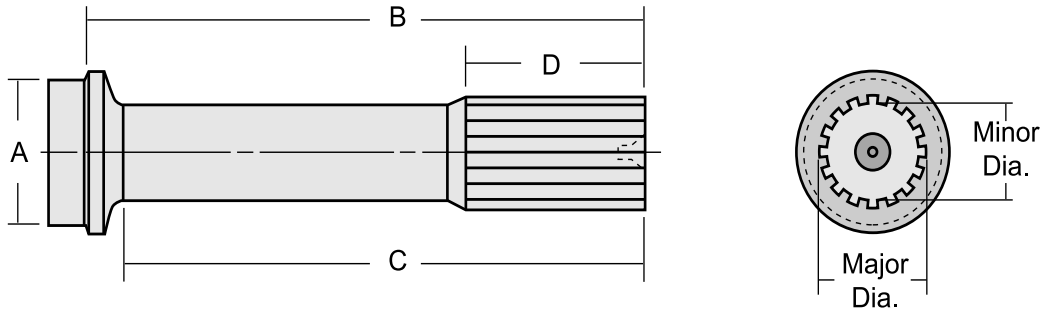
1.750 - 16 Spline

R4-40-3159	3.000	0.095	2.817	9.219	8.250	3.000	YES
R4-40-761	3.500	0.095	3.313	6.781	5.812	3.000	YES
R4-40-721	3.500	0.095	3.313	9.219	8.250	3.000	YES
R4-40-3135	3.500	0.134	3.234	6.781	5.812	3.000	YES
R4-40-3136	3.500	0.134	3.234	9.219	8.250	3.000	YES
R4-40-951	3.500	0.156	3.188	6.781	5.812	3.000	YES
R4-40-3137	3.500	0.156	3.188	9.219	8.250	3.000	YES

2.000 - 16 Spline

R5-40-501	3.500	0.095	3.313	9.562	8.656	3.500	YES
R5-40-1011	3.500	0.134	3.234	9.688	8.781	3.500	YES
R5-40-1041	3.500	0.134	3.234	10.188	9.281	3.500	YES
R5-40-1031	3.500	0.156	3.193	9.562	8.656	3.500	YES
R5-40-3139	3.500	0.156	3.193	10.188	9.281	3.500	YES
R5-40-1051	4.000	0.134	3.750	9.844	8.781	3.500	YES

STUB SHAFTS (Slip Yoke Style)



RDL Part Number	Fits Tube Diameter	Tube Wall Thickness	A Butt Diameter	B End of Spline to Weld	C End of Spline to Radius	D Length of Spline	Coating on Spline
-----------------	--------------------	---------------------	--------------------	----------------------------	------------------------------	-----------------------	-------------------

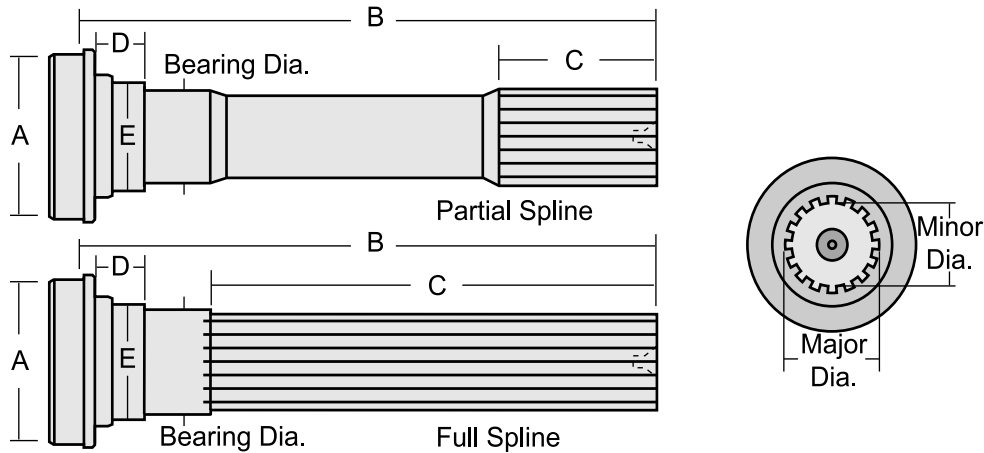
2.500 - 16 Spline

R6-40-521	4.000	0.134	3.750	10.562	9.562	4.000	YES
R6-40-541	4.000	0.134	3.750	9.250	8.250	4.000	YES
R6-40-621**	4.500	0.134	4.242	10.656	9.469	4.000	YES

3.000 - 16 Spline

R6.5-40-201	4.500	0.134	4.250	9.469	8.406	4.500	YES
R6.5-40-191	4.500	0.134	4.250	11.250	10.031	4.500	YES

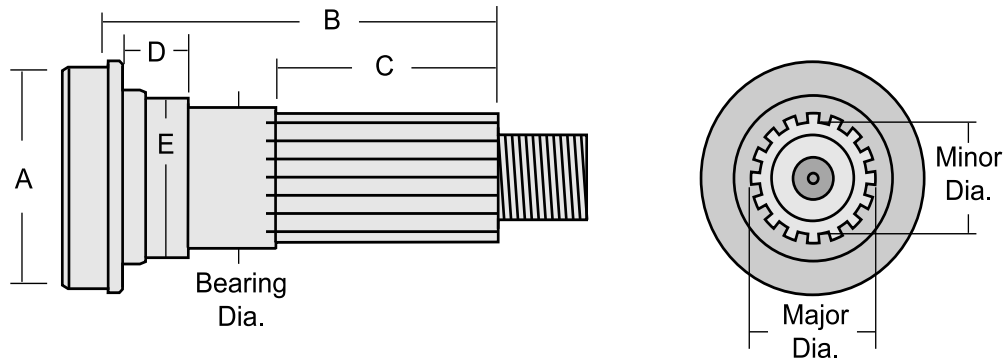
MIDSHIP STUB SHAFTS (Slip Yoke Style)



RDL Part Number	Full or Partial Spline	Fits Tube Dia. / Wall	A Butt Diameter	B End of Spline to Weld	C Length of Spline	D Length of Shoulder	E Shoulder Diameter
0.9375 - 22 Spline			1.181 Bearing Diameter				
R10-53-9572B**	Partial Spline	1.250 / 0.120	1.031	4.500	2.400	--	--
1.375 - 15 Based on 16 Spline			1.378 Bearing Diameter				
R2-53-711	Partial Spline	3.000 / 0.083	2.844	9.031	2.500	0.812	1.688
1.375 - 16 Spline			1.378 Bearing Diameter				
R2-53-501	Full Spline	3.000 / 0.083	2.844	8.000	5.406	0.812	1.688
1.375 - 31 Based on 32 Spline			1.378 Bearing Diameter				
R3-53-1181-5	Partial Spline	1.620 / 0.205	1.222	8.812	3.344	1.125	1.719
R3-53-1991	Partial Spline	2.750 / 0.065	2.625	8.812	3.344	1.125	1.719
R3-53-1181-1	Partial Spline	2.750 / 0.095	2.570	8.812	3.344	1.125	1.719
R3-53-2497**	Partial Spline	2.750 / 0.095	2.586	9.625	3.500	1.000	1.735
1.500 - 16 Spline			1.575 Bearing Diameter				
R3-53-1031	Full Spline	3.000 / 0.083	2.844	7.062	4.438	0.875	1.812
R3-53-2281**	Partial Spline	3.500 / 0.083	3.344	10.718	3.000	0.875	1.812
1.562 - 16 Spline			1.575 Bearing Diameter				
R3-53-451	Full Spline	3.500 / 0.083	3.344	8.531	5.938	0.812	1.938
1.750 - 16 Spline			1.772 Bearing Diameter				
R4-53-61	Full Spline	3.500 / 0.095	3.313	8.562	5.938	0.812	2.188
1.937 - 30 Spline			1.968 Bearing Diameter				
R90-53-21**	Partial Spline	4.000 / 0.095	3.818	10.000	4.000	0.812	2.438

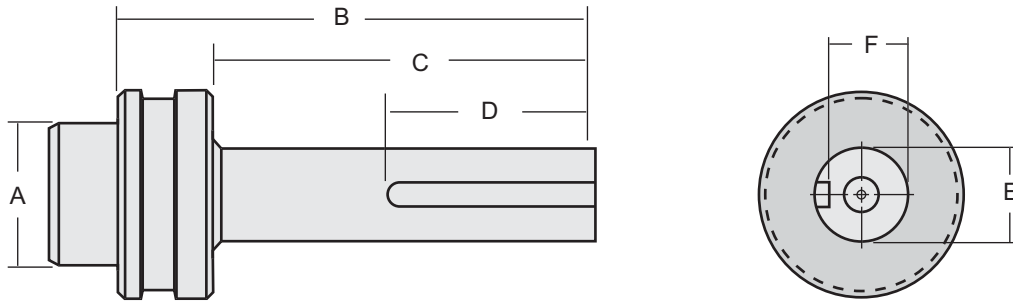
** New addition to MC0518-5 catalog

MIDSHIP STUB SHAFTS (End Yoke Style)



RDL Part Number	Fits Tube Dia. / Wall	A Butt Diameter	B End of Spline to Weld	C Length of Spline	D Length of Shoulder	E Shoulder Diameter	Thread Size
1.500 - 10 Spline		1.000 - 20 Thd		1.575 Bearing Diameter			
R3-53-1781**	3.000 / .083	2.844	3.980	1.970	0.880	1.811	1.00-20
R3-53-1791**	3.500 / .083	3.344	3.980	1.970	0.880	1.811	1.00-20
1.958 - 10 Spline		1.250 - 18 Thd		1.967 Bearing Diameter			
R6-53-201	4.000 / .134	3.750	5.156	2.875	0.812	2.438	1.25-18
2.350 - 16 Spline		1.250 - 18 Thd		2.362 Bearing Diameter			
R6-53-311	4.000 / .134	3.750	5.312	2.625	0.812	2.875	1.25-18
R6.5-53-91**	4.500 / .134	4.250	5.312	2.750	1.132	2.875	1.25-18
2.350 - 46 Spline		M30X2-6G		2.362 Bearing Diameter			
R250-53-11**	5.197 / .236	4.735	5.291	2.618	0.812	2.886	M30X2-6G

MIDSHIP STUB SHAFTS (Auxiliary P.T.O. Style)



RDL Part Number	Fits Tube Dia. / Wall	A Butt Diameter	B End of Stub to Weld	C Length of Stub	D Length of Keyway	E Stub Diameter	F Keyway Depth
-----------------	-----------------------	-----------------	-----------------------	------------------	--------------------	-----------------	----------------

1.000 - 1/4" Keyway

2.250 Bearing Diameter

R10-53-3181	1.250 X .120	1.020	5.130	4.130	2.260	.998	.849
R10-53-18	1.750 X .065	1.630	5.130	4.130	2.260	.998	.849
R10-53-699	2.000 X .083	1.840	5.130	4.130	2.260	.998	.849

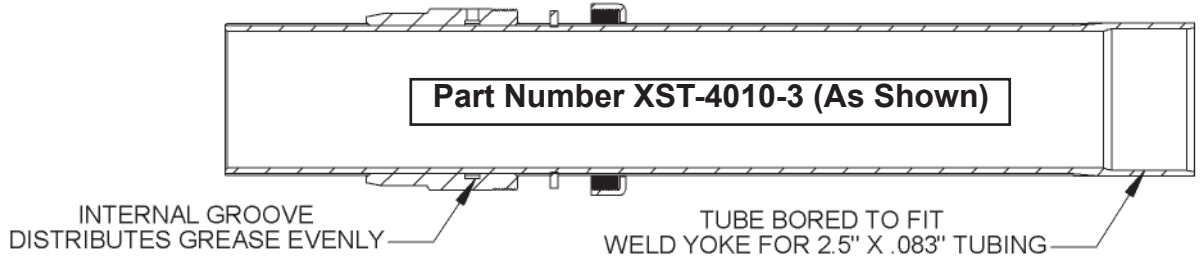
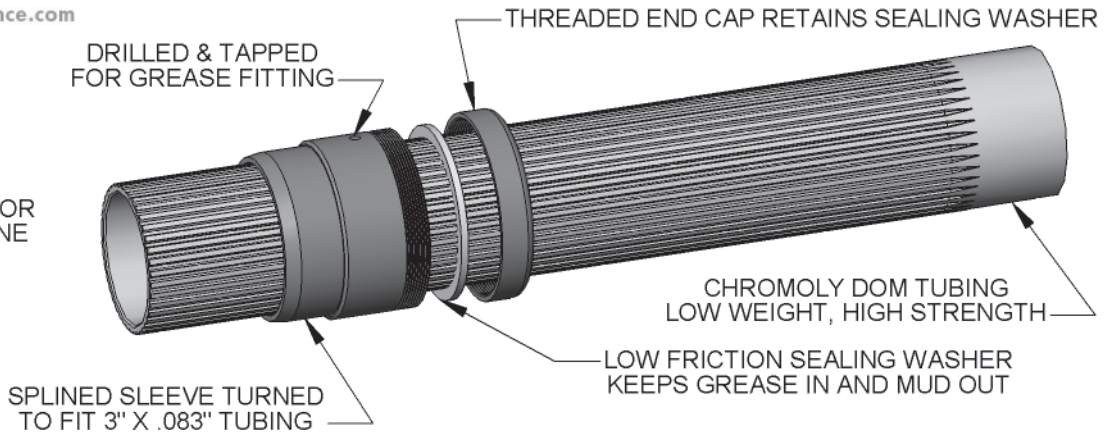
EXTREME TRAVEL SLIP SPLINE (Tubular and Solid Style)



TUBULAR SLIP SPLINES
LAB TESTED TO 4900 FT-LBS
ULTIMATE TORQUE STRENGTH

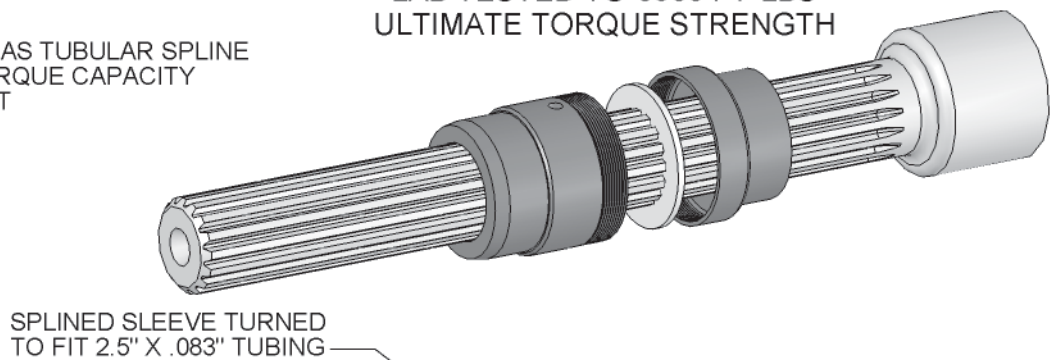
YOUR SOLUTION FOR
EXTREME DRIVELINE
PROBLEMS IN:

LIFTED TRUCKS
LOWRIDERS
RACE CARS



SOLID SLIP SPLINES
LAB TESTED TO 6500 FT-LBS
ULTIMATE TORQUE STRENGTH

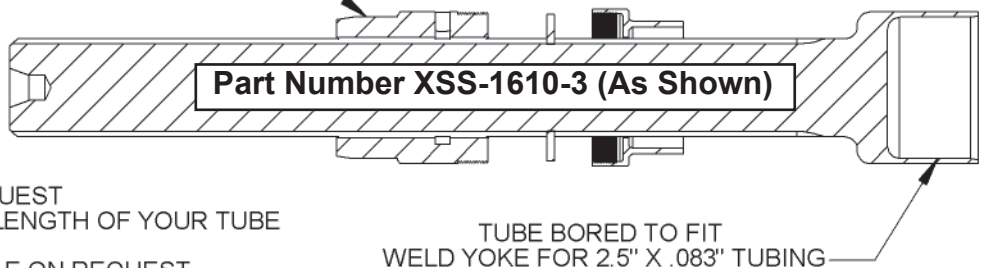
SAME FEATURES AS TUBULAR SPLINE
WITH HIGHER TORQUE CAPACITY
AND LOWER COST



INVOLUTE SPLINE:
BACKLASH-FREE FIT
EASILY BALANCED

12" TRAVEL STANDARD
MORE TRAVEL ON REQUEST
LIMITED ONLY BY THE LENGTH OF YOUR TUBE

OTHER SIZES AVAILABLE ON REQUEST
*TORQUE STRENGTHS LISTED ARE FOR ILLUSTRATED SPLINES





PART NUMBER INTERCHANGE LIST

MFG. NO.	OUR NO.	MFG. NO.	OUR NO.
AAM		N3-53-1181-1.....	R3-53-1181-1
40032497.....	R3-53-2497	N3-53-1181-2.....	R3-53-1991
40032503.....	R3-53-1991	N3-53-1181-5.....	R3-53-1181-5
40038581.....	R3-53-8581	N3-53-1361.....	R3-53-1361
		N3-53-1781.....	R3-53-1781
		N3-53-1791.....	R3-53-1791
Neapco		N4-40-721.....	R4-40-721
10-0699.....	R10-53-699	N4-40-761.....	R4-40-761
N2-40-1031.....	R2-40-1031	N4-53-61.....	R4-53-61
N2-40-1221.....	R2-40-1221	N5-40-501.....	R5-40-501
N2-40-1231.....	R2-40-1671	N5-40-1011.....	R5-40-1011
N2-40-1291.....	R2-40-1291	N5-40-1041.....	R5-40-1041
N2-40-1521.....	R2-40-1521	N5-40-1051.....	R5-40-1051
N2-40-1531.....	R2-40-1531	N6-40-521.....	R6-40-521
N2-40-1701.....	R2-40-1701	N6-40-541.....	R6-40-541
N2-40-1701-1.....	R2-40-1701-1	N6-40-621.....	R6-40-621
N2-40-1701-2.....	R2-40-1701-2	N6-53-201.....	R6-53-201
N2-40-1711.....	R2-40-1711	N6-53-311.....	R6-53-311
N2-40-1712.....	R2-40-3197	N6.5-40-191.....	R6.5-40-191
N2-40-1741.....	R2-40-1741	N6.5-40-201.....	R6.5-40-201
N2-40-1771.....	R2-40-1771	N6.5-53-91.....	R6.5-53-91
N2-40-1781.....	R2-40-1781	N250-53-11.....	R250-53-11
N2-40-1811.....	R2-40-1811		
N2-40-1841-1.....	R2-40-1841	Spicer	
N2-40-1851.....	R2-40-1851	2-40-971.....	R2-40-971
N2-40-1871.....	R2-40-1871	2-40-1031.....	R2-40-1031
N2-40-1951.....	R2-40-1951	2-40-1221.....	R2-40-1221
N2-40-2051.....	R2-40-2051	2-40-1291.....	R2-40-1291
N2-40-2231.....	R2-40-2231	2-40-1521.....	R2-40-1521
N2-40-2301.....	R2-40-2301	2-40-1531.....	R2-40-1531
N2-40-2381.....	R2-40-2381	2-40-1671.....	R2-40-1671
N2-42-501.....	R2-42-501	2-40-1701.....	R2-40-1701
N2-53-501.....	R2-53-501	2-40-1711.....	R2-40-1711
N2-53-711.....	R2-53-711	2-40-1741.....	R2-40-1741
N3-53-1101.....	R3-40-1101	2-40-1771.....	R2-40-1771
N3-40-1222.....	R3-40-3156	2-40-1811.....	R2-40-1811
N3-40-1391.....	R3-40-1871	2-40-1841.....	R2-40-1841
N3-40-1471.....	R3-40-1471	2-40-1871.....	R2-40-1871
N3-40-1472.....	R3-40-1472	2-40-1851.....	R2-40-1851
N3-40-1491.....	R3-40-1491	2-40-2021.....	R2-40-2021
N3-40-1531.....	R3-40-1531	2-40-2051.....	R2-40-2051
N3-40-1561.....	R3-40-1621	2-40-2231.....	R2-40-2231
N3-40-1571.....	R3-40-1571	2-40-2241.....	R2-40-2241
N3-40-1611.....	R3-40-1611	2-40-2301.....	R2-40-2301
N3-53-451.....	R3-53-451	2-40-2361.....	R2-40-1781
N3-53-1031.....	R3-53-1031		



PART NUMBER INTERCHANGE LIST

MFG. NO.	OUR NO.	MFG. NO.	OUR NO.
2-40-2381	R2-40-2381	Spicer (cont.)	
2-40-2651	R2-40-2651		
2-40-2661	R2-40-1701-3		
2-40-2681	R2-40-2681		
2-40-2741	R2-40-2741		
2-40-2831	R2-40-1701-1		
2-42-501	R2-42-501		
2-53-501	R2-53-501		
2-53-711	R2-53-711		
3-40-1101	R3-40-1101		
3-40-1281	R3-40-1281		
3-40-1421	R3-40-1421		
3-40-1471	R3-40-1471		
3-40-1491	R3-40-1491		
3-40-1531	R3-40-1531		
3-40-1541	R3-40-1541		
3-40-1571	R3-40-1571		
3-40-1611	R3-40-1611		
3-40-1621	R3-40-1621		
3-40-1871	R3-40-1871		
3-40-2131	R3-40-2131		
3-53-451	R3-53-451		
3-53-1031	R3-53-1031		
3-53-1191	R3-53-1191		
3-53-1361	R3-53-1361		
3-53-1781	R3-53-1781		
3-53-1791	R3-53-1791		
3-53-1991	R3-53-1991		
3-53-2281	R3-53-2281		
4-40-721	R4-40-721		
4-40-761	R4-40-761		
4-40-951	R4-40-951		
4-53-61	R4-53-61		
5-40-501	R5-40-501		
5-40-1011	R5-40-1011		
5-40-1031	R5-40-1031		
5-40-1041	R5-40-1041		
5-40-1051	R5-40-1051		
6-40-521	R6-40-521		
6-40-541	R6-40-541		
6-40-621	R6-40-621		
6-53-201	R6-53-201		
6-53-311	R6-53-311		
6.5-40-191	R6.5-40-191		
6.5-40-201	R6.5-40-201		
6.5-53-91	R6.5-53-91		
90-53-21	R90-53-21		

Notes:

PART NUMBER INDEX



PART NUMBER	PG	PART NUMBER	PG
R2-40-971	4	R3-40-1541	6
R2-40-1031	4	R3-40-1571	6
R2-40-1221	5	R3-40-1611	5
R2-40-1291	4	R3-40-1621	6
R2-40-1427**	4	R3-40-1871	6
R2-40-1521	5	R3-40-2131	5
R2-40-1531	5	R3-40-3156	5
R2-40-1671	5	R3-40-3206**	5
R2-40-1701	4	R3-53-451	8
R2-40-1701-1	4	R3-53-1031	8
R2-40-1701-2	4	R3-53-1181-1	8
R2-40-1701-3	4	R3-53-1181-5	8
R2-40-1711	4	R3-53-1781**	9
R2-40-1741	4	R3-53-1791**	9
R2-40-1771	4	R3-53-2281**	8
R2-40-1781	5	R3-53-1991	8
R2-40-1811	4	R3-53-2497**	8
R2-40-1841	4	R4-40-721	6
R2-40-1851	5	R4-40-761	6
R2-40-1871	5	R4-40-951	6
R2-40-1951**	5	R4-40-3135	6
R2-40-2021	4	R4-40-3136	6
R2-40-2051	5	R4-40-3137	6
R2-40-2231	5	R4-40-3159	6
R2-40-2241	4	R4-53-61	8
R2-40-2301	4	R5-40-501	6
R2-40-2321	5	R5-40-1011	6
R2-40-2381	4	R5-40-1031	6
R2-40-2381A	4	R5-40-1041	6
R2-40-2651	5	R5-40-1051	6
R2-40-2681	4	R5-40-3139	6
R2-40-2681-2	4	R6-40-521	7
R2-40-2741	4	R6-40-541	7
R2-40-3127	4	R6-40-621**	7
R2-40-3161	5	R6-53-201	9
R2-40-3177	4	R6-53-311	9
R2-40-3197**	5	R6.5-40-191	7
R2-42-501	4	R6.5-40-201	7
R2-53-501	8	R6.5-53-91**	9
R2-53-711	8	R6.5-53-311	9
R3-40-1101	5	R10-53-18	10
R3-40-1281	6	R10-53-699	10
R3-40-1421	5	R10-53-3181	10
R3-40-1471	5	R10-53-9572B**	8
R3-40-1472**	5	R90-53-21**	8
R3-40-1491	6	R250-53-11**	9
R3-40-1531	6	XSS-1610-3	11
		XST-4010-3	11

** New addition to MC0518-5 catalog



MANUFACTURER OF DRIVELINE COMPONENTS
1500 11TH AVENUE ROCKFORD, IL 61104
PHONE (815) 962-1411 FAX (815) 965-4857
RockfordDriveLine.com